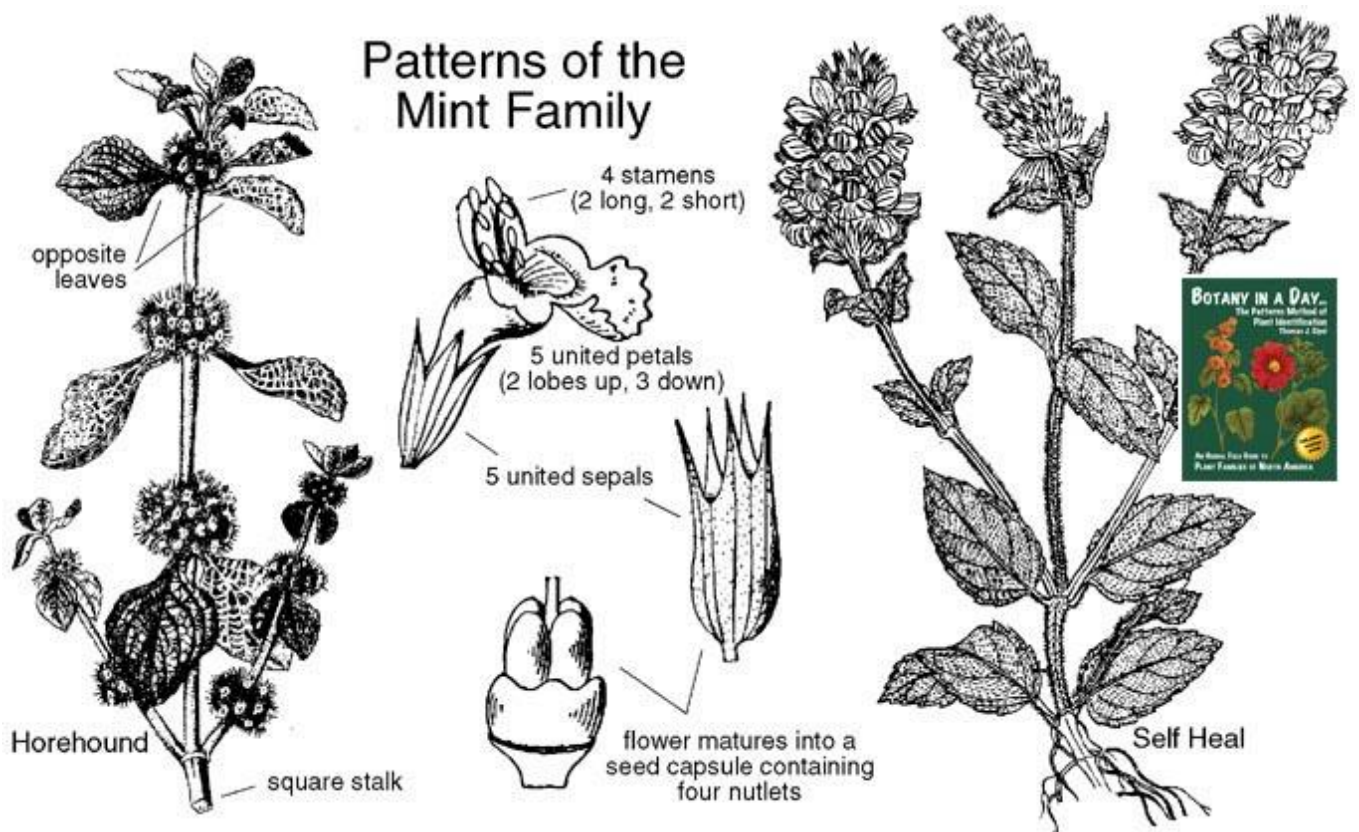


Familija Lamiaceae $\uparrow K(5) C(5) A2+2 G(2)$



Lamium purpureum



Mentha sp.



Salvia officinalis

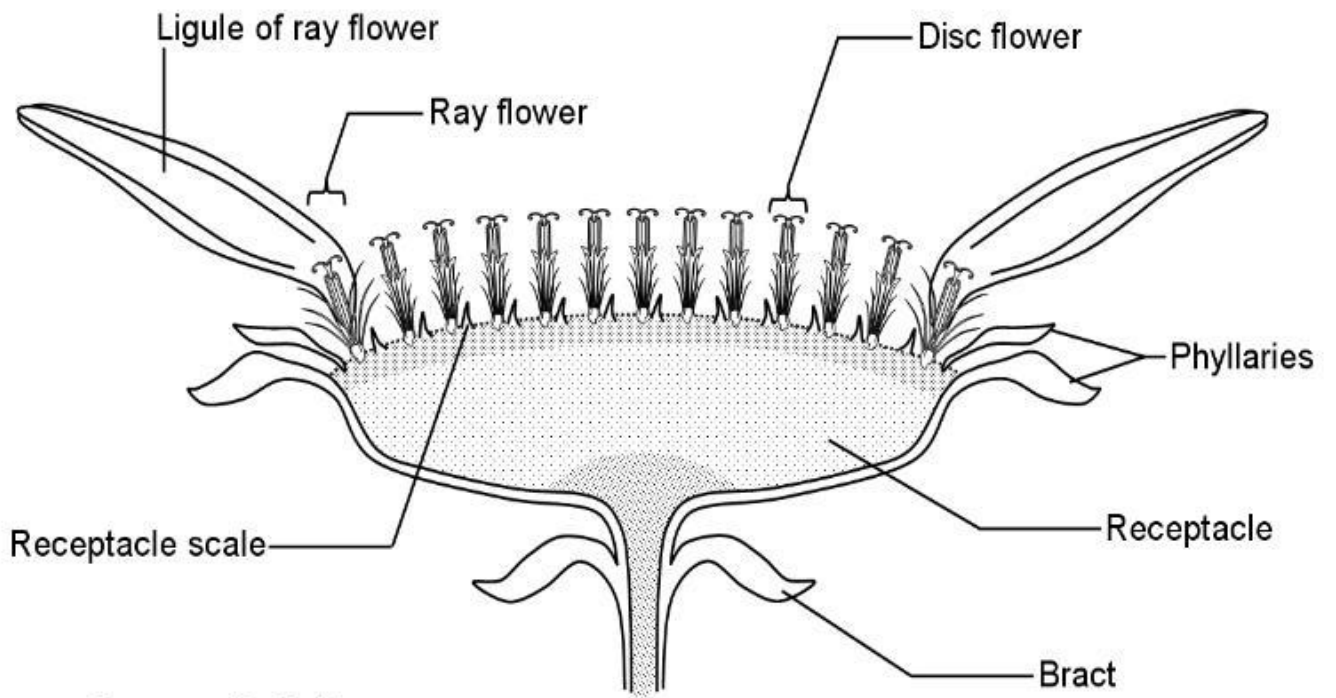
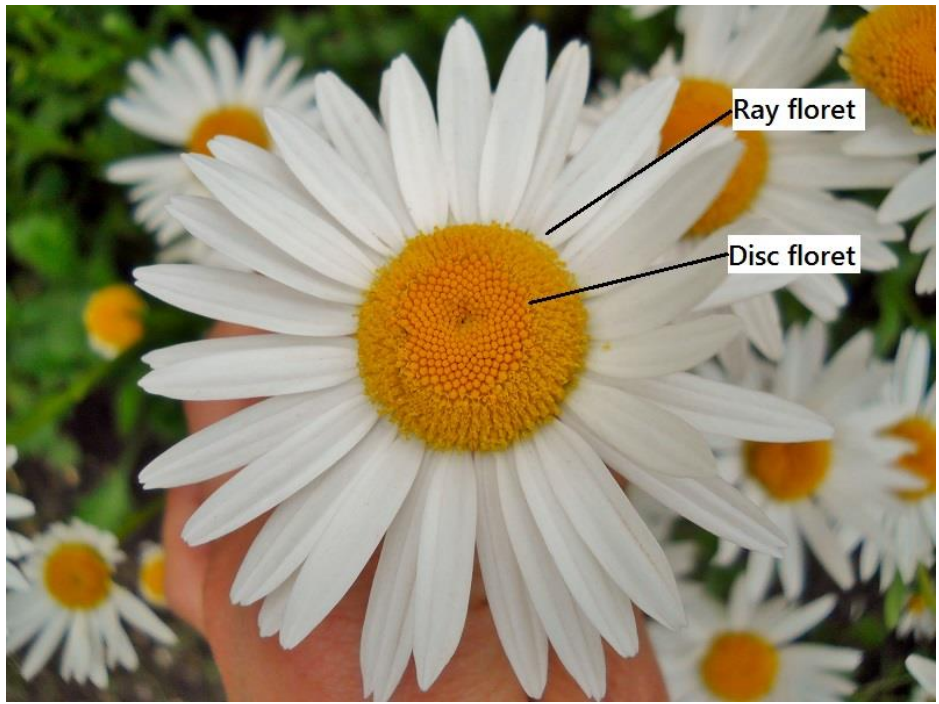


Thymus sp.

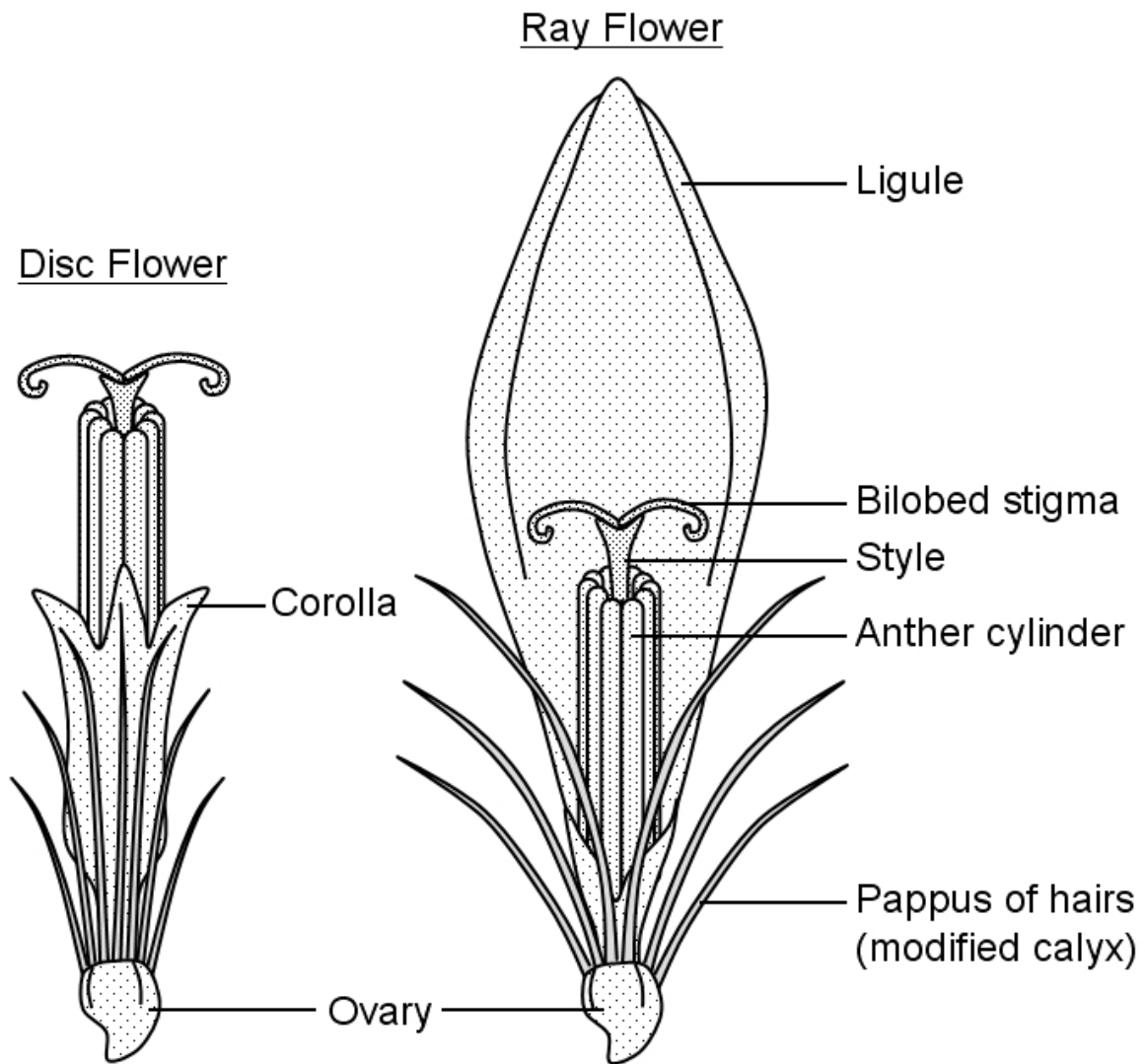


Rosmarinus officinalis

Familija Asteraceae ↑ * K5-0 C(5) A(5) G/(2)



Composite Inflorescence
e.g. *Chrysanthemum*



1. Tubuliflorae

2. Liguliflorae



Helianthus annuus



Matricaria chamomilla



Bellis perennis



Cichorium intybus



Taraxacum officinale



Senecio vulgaris